



A Capital Campaign for the
CHILDREN'S MUSEUM OF SONOMA COUNTY

The Children's Museum of Sonoma County is bursting at the seams and needs more space to expand exhibits and programs.

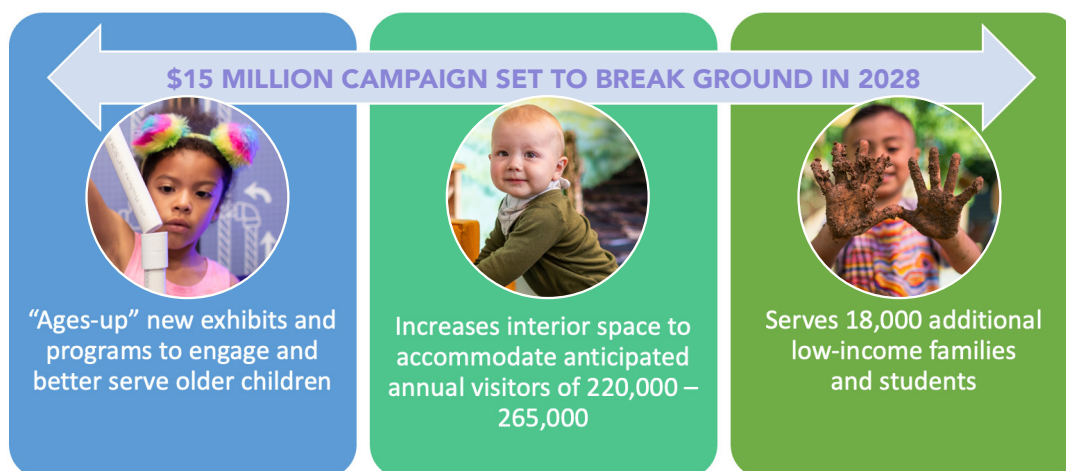
In 2014, the Museum welcomed 70,000 visitors. Last year, 200,000 guests visited the campus.



Current Challenges

- No space for new STEM exhibits to engage children ages 8 – 12
- Waiting list for school field trips and extremely limited multi-purpose space
- Insufficient parking for current and projected increase in visitors

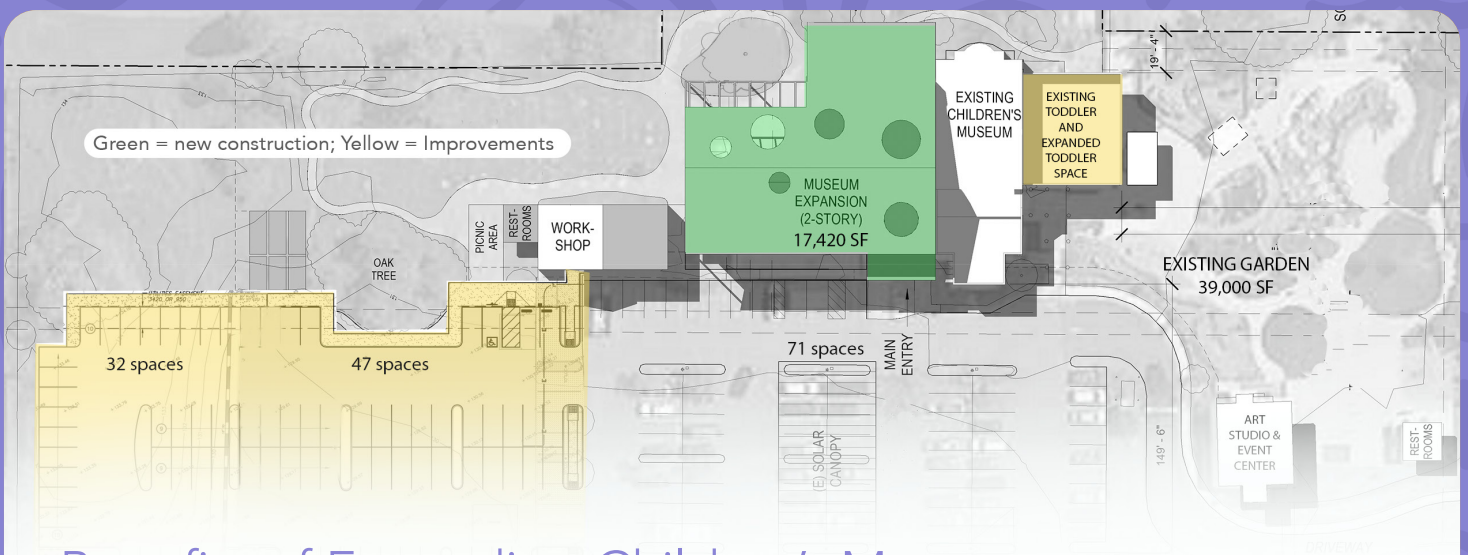
Solution



When you enter the Children's Museum of Sonoma County, you are walking into a vibrant, joyful space where children learn through hands-on, playful experiences. Engaging STEM-based exhibits, programming that engages all ages, and immersive environments inspire imagination and wonder, in children and adults. The Children's Museum is a valuable and natural partner for educators as we empower the next generation of leaders, inventors, thinkers, and dreamers.

- Dr. Amie Carter, Sonoma County Superintendent of Schools

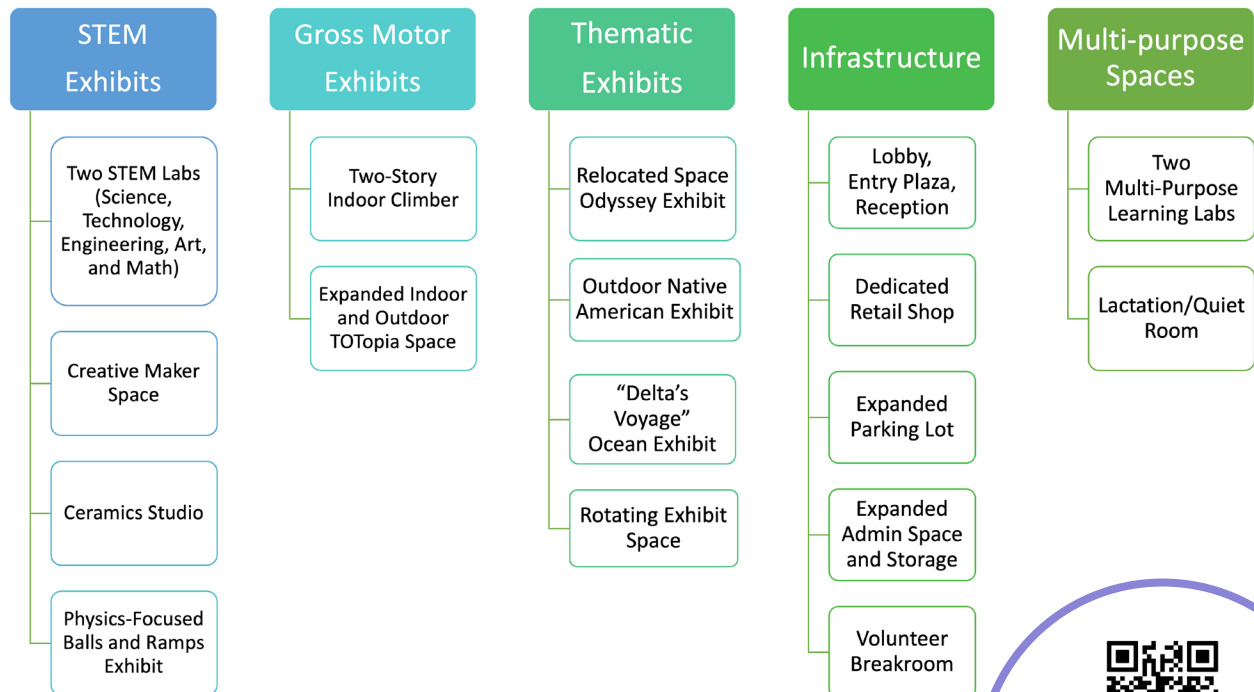
Together we can ensure that the Children's Museum of Sonoma County continues to provide experiential learning for ALL children.



Benefits of Expanding Children's Museum

- Triple the indoor space with 17,420sf expansion
- Ability to welcome 30% more low-income visitors annually
- Increase exhibit and program space from 4,800sf to 12,000sf
- Double multi-purpose space for programs and school field trips
- Expand toddler exhibit and add new outdoor toddler space
- Expand parking lot from 118 spaces to 150 paved spaces
- Provide greater opportunities for inclusivity and sense of belonging

New Features at a Glance...



LEARN MORE
or
DONATE